

NUTRIENTS FOR A GREAT LIFE

GreatLife

WORLDWIDE

PRODUCT CATALOG





TRANSFER FACTOR
CELLULAR IMMUNE SUPPORT



WILD CONK
SUPER IMMUNE SUPPORT



PHYTOZON
ANTI-AGING



CHERRY BLASTER
ENHANCED ENERGY PERFORMANCE



**STEM CELL
RELEASE FACTOR**
RENEW AND REPAIR



SLEEP - TONIGHT
NATURAL SLEEP SUPPORT



NU-DERMA GOLD
ANTI-AGING SERUM



CLEAR HEART
CARDIOVASCULAR SUPPORT



KETO FAT BURNER
KETOSIS SUPPORT



SUPER GREENS SUPER FRUITS

SUPERFOODS



GET JUICED

SUPERFOODS



ACAI PLUS

SUPERFRUITS POWERHOUSE



PROCLEANSE

DAILY GUT SUPPORT



PURE AQUAMINS

PURIFYING MINERALS



PURE O₂

BOOST OXYGEN IN YOUR BODY



GLP - XTREME

ADVANCED WEIGHT
MANAGEMENT FORMULA

**DOCTOR
RECOMMENDED,
SCIENCE-BASED
PRODUCTS YOU
CAN TRUST**







TRANSFER FACTOR

ADVANCED FORMULA • CELLULAR IMMUNE SUPPORT

Transfer factors are smart molecules with the job of identifying potential threats, reacting intelligently and precisely to those threats, then retaining the characteristics of those threats.

When they inevitably encounter the same threat or slight variation of that threat, the immune system can identify it quickly and react to it more efficiently and effectively.

These smart molecules have been the subject of thousands of scientific studies to explore their role in teaching the immune

system to identify, react to, then retain immune information for future reference.

- From 1974 to 1999, researchers from Italy and France administered transfer factors to 1,647 patients with no reported side effects. One-third of these patients were monitored for 25 years.
- The National Institute of Health emphasized the benefits of transfer factors by publishing 12,000 scientific studies on its benefits for the immune system.

POWERFUL IMMUNE SUPPORT IN EVERY CAPSULE

NURTURE YOUR IMMUNE SYSTEM TO ENHANCE YOUR BODY'S ABILITY TO THRIVE! UTILIZE OUR ADVANCED TRANSFER FACTOR FORMULA AND ENHANCE YOUR NATURAL IMMUNE SYSTEM TO SUPPORT A HEALTHIER, HAPPIER YOU!



Transfer Factors

Smart molecules that already exist in your body. They react to, identify, and retain information on threats you've encountered. Education gives them an advantage for future encounters.



Proteins and Peptides from Cow Colostrum

Colostrum is widely known for its immune system benefits, which are not species-specific, meaning the benefits of cow colostrum can be transferred from one mammal to another. With their pathogen-filled environments, we can benefit from their lifelong immune system experience.



Maitake and Shiitake Mushroom Extract

These are rich in many nutrients, including beta-glucans. They strongly stimulate both the cellular and humoral branch of immune reactions.



Cordyceps Sinensis Mycelia Extract

Cordyceps is known as an adaptogen, which means it may help your body adapt to stress. It has the ability to boost and suppress immune function due to its adaptogenic nature.

Supplement Facts

Serving Size: 2 Capsules
Servings Per Container: 30

Amount Per Serving	% DV
Maximum Strength Proprietary Blend	
TransferFactor Advanced Formula™ Blend	1100 mg **
(Proprietary concentrate of Transfer Factor, Proteins and Peptides from Cow Colostrum, Maitake, Shiitake, <i>Cordyceps Sinensis</i> Mycelia extract.)	

**% Daily Value (DV) not established.

OTHER INGREDIENTS: Rice flour, MCC, Vegetable Magnesium Stearate, Silicon Dioxide.

MANUFACTURED EXCLUSIVELY FOR:
Great Life Worldwide
Beloit, KS, 67420
1-866-822-5559



*These statements have not been evaluated by the Food and Drug Administration. This product is not intended to diagnose, treat, cure or prevent any disease.

CAREFULLY DESIGNED TO OFFER IMMUNE SUPPORT

THE WAY NATURE INTENDED



WILD CONK

SUPER IMMUNE SUPPORT + ESSENTIAL OILS BLENDS

Offering a unique blend of 1200% concentrate of Wild Tawtnuk Mushroom, combined with concentrated organic essential oils blends, including Black Cumin, Lemon, Cinnamon, Peppermint, and Sacred Frankincense, Wild Conk is considered one of the most powerful weapons in the immune supplement arsenal.

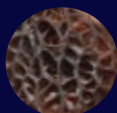
At the heart of Wild Conk is the Wild Tawtnuk Mushroom, renowned for its high concentration of biologically active Beta-Glucan molecules. In fact, there are 94

Million biologically active Beta-Glucans per serving in our formula.

These molecules are known for their supportive role in immune health, potentially aiding the body in producing specific immune cells. This process is crucial for effectively utilizing the antioxidants in our diet.

Each drop is a synergy of nature's potent ingredients, thoughtfully combined to support your journey towards enhanced immunity and overall well-being.

POWERFUL IMMUNE SUPPORT IN EVERY DROP



Tawtnúk Apán Mushroom

Wild Apán is a sacred and ancient medicinal mushroom of the Native American tribes. This superfood feeds your cells and supports the immune system.



Lemon Essential Oil

From the pressed peel of the organic lemon, this oil can naturally help cleanse the body and aid in digestion. The high vitamin content supports the body's immune system.



Black Cumin

Black cumin oil can help keep the immune system in balance, so it doesn't overreact or underreact.



Cinnamon Bark Essential Oil

Modern scientific studies indicate that cinnamon bark possesses free radical neutralizing properties and may help to support a healthy, balanced immune system response.



Peppermint Essential Oil

The historical uses and research conducted on the benefits of peppermint all have come to the conclusion that it is one of the most naturally beneficial plants in the world.



Sacred Frankincense Essential Oil

The benefits of frankincense oil go back thousands of years. It has been known to support the immune system and healthy inflammation levels and offers a variety of other health advantages.

INGREDIENTS: 1200% Concentrate of Wild Tawtnuk Mushroom. Organic Essential Oils: Black Cumin, Lemon, Cinnamon, Peppermint, Sacred Frankincense.

SUPPLEMENT FACTS: Not a significant source of protein, carbohydrates, or fats.

SUGGESTED USE: Three half-full dropper squirts per day. Thirty daily servings per bottle.

MANUFACTURED EXCLUSIVELY FOR:
Great Life Worldwide
Beloit, KS, 67420 1-785-654-7080



*These statements have not been evaluated by the Food and Drug Administration. This product is not intended to diagnose, treat, cure or prevent any disease.

DELIVERS VITALITY FOR BODY REGENERATION

ANTI-AGING



PHYTOZON

A POWERFUL PHYTO-NUTRITION FORMULA

In an era where maintaining vitality and wellness is more challenging than ever, PhytoZon emerges as a natural solution. Its unique formulation is designed to support your body's inherent healing processes and aid in the maintenance of overall health and vigor.

After the age of 20, the body produces less and less IGF-1, an important anti-aging compound produced by the liver.

One of PhytoZon's patented and highly concentrated ingredients is RNI249®. This extraordinary ingredient is the only known natural or pharmaceutical substance shown to increase the body's production of IGF-1.

This exclusive formula was designed to enhance your body's natural ability to produce IGF-1 at the cellular level.

IGF-1 is a crucial hormone used for cellular growth, repair, and healthy aging. It also plays a vital role in maintaining muscle strength, bone density, and overall cellular health, which are all key components in combating the natural decline associated with aging.

NURTURE YOUR BODY'S ABILITY TO THRIVE, DESPITE THE NATURAL CHALLENGES OF AGING.

Packed full of all-natural, powerful ingredients.



RNI249 Maca®
(*Lepidium meyenii*
hypocotyl) extract

Known for its ability to support joint health and reduce discomfort associated with physical activity.



Vincaria® Cat's Claw
(*Uncaria spp.* root)
extract

Notably used for its effect on stimulating and boosting the immune system.



Progrado® and
Zangrado® (Croton spp.
resin) extracts

Together, these ingredients have powerful antioxidant and immune modulation effects.



Lutein (marigold flower
extract)

Known for its protective effects on the eyes against oxidative stress.



Piperine (Piper longum
fruit extract)

Piperine extract has beneficial functions that increase absorption of a variety of nutrients.



Astragalus (Astragalus
membranaceus root
extract)

Used in traditional Chinese medicine for years and had many health benefits including protecting and supporting the immune system.

Supplement Facts

Serving Size: 2 Vegetable Capsules

Servings per Container: 30

Amount Per Serving

% Daily Value

Phytochemical Blend: RNI249 Maca® (*Lepidium meyenii* hypocotyl) extract, Vincaria® Cat's Claw (*Uncaria spp.* root) extract, Progrado® (*Croton spp.* resin) extract, Zangrado® (*Croton spp.* resin) extract, Lutein (marigold flower extract), Astragalus (*Astragalus membranaceus* root extract), Piperine (*Piper longum* fruit extract) 1710mg †

*% Daily Value Not Established.

OTHER INGREDIENTS: hypromellose (vegetable capsule),
Diatomaceous Earth.

MANUFACTURED EXCLUSIVELY FOR:
Great Life Worldwide
Beloit, KS 67420
1-866-822-5559



*These statements have not been evaluated by the Food and Drug Administration. This product is not intended to diagnose, treat, cure or prevent any disease.

Key Benefits

- 100% all natural
- Increases the body's production of IGF-1 at the cellular level
- Helps maintain muscle strength
- Helps maintain bone density
- Supports joint health
- Made with non-GMO ingredients
- Gluten free
- Not made with soy or dairy
- Nut free

GREG'S

CHERRY BLASTER

No other drink comes close.



Greg's Cherry Blaster Energy Drink™ is a complex proprietary formula developed specifically for those who seek an edge in physical performance and mental focus. This remarkable formula features a blend of essential nutrients and botanical extracts, creating a powerful synergy to boost energy and enhance performance, brain power, and stamina.

Clinical studies have demonstrated that the Cherry Blaster™ formula significantly enhances brain functions related to perception and learning. The neural signals associated with these cognitive

processes were shown to improve following the consumption of the Cherry Blaster™ formula, as validated by electroencephalographic (EEG) measures. Participants experienced increased brain activation for both perception and learning at the 15-minute, 30-minute, and 60-minute time points after consumption.

No other product in this category compares. Experience the scientifically-backed benefits of enhanced focus, mental sharpness, and sustained energy without the crash.

Extreme Energy
Scientifically Formulated
Increased Performance
Clinically Proven Ingredients
Incredible Results

Embrace the blend of
nature and science for a
more vibrant, active life.

VITAMINS A, C, E – SUPER ANTIOXIDANTS
B1, B2, B3, B4, B5, B6, B12 – METABOLIC ESSENTIALS
CHOLINE BITARTRATE L-PHENYLALANINE – NATURAL NOOTROPIC
L-TYROSINE – MOOD BOOSTING AMINO
L-THEANINE – COGNITIVE ENHANCER
L-GLYCINE – FATIGUE FIGHTER
L-CARNITINE – ENERGIZING AMINO ACID
SELENIUM – SUPER ANTIOXIDANT
L-TAURINE – CALM INDUCING AMINO
GABA – KEY NEUROTRANSMITTER
CoQ10 – SUPER ANTIOXIDANT
ZINC – ESSENTIAL TRACE MINERAL
CHROMIUM – BLOOD SUGAR REGULATOR
CREATINE – PERFORMANCE BOOSTER
GINSENG – ENERGIZING ADAPTOGEN
GINKGO BILOBA – MEMORY ENHANCING HERB
YERBA MATE – BALANCED ENERGY BOOST
GUARANA – NATURAL CAFFEINE SOURCE
GLUCURONOLACTONE – METABOLIC + DETOXIFIER
MAGNESIUM OXIDE – OXYGENATING MINERAL

SUPPLEMENT FACTS			Amount Per Serving		% DV
Serving Size: ¾ Scoop (0.17 oz/4.7g)					
	Amount Per Serving	% DV			
Calories	2110 mg	**			
Total Carbohydrates	3g	0.75%*			
Sugars	0g	**			
Vitamin A (100% as beta-carotene)	450mcg	13%			
Vitamin C (as ascorbic acid)	75mg	83%			
Vitamin E (as mixed d-alpha tocopherols)	10mg	67%			
Thiamin (as thiamin hydrochloride)	0.75mg	62%			
Riboflavin	2.25mg	173%			
Niacin	15mg	94%			
Vitamin B6 (as pyridoxine hydrochloride)	7.5mg	441%			
Vitamin B12 (as cyanocobalamin)	11.25mcg	469%			
Pantothenic Acid (as d-calcium pantothenate)	15mg	300%			
Magnesium (as magnesium oxide)	75mg	18%			
Zinc (as zinc citrate)	2.25mg	20.25%			

	Amount Per Serving	% DV
Selenium (as selenomethionine)	15mcg	27%
Chromium (as chromium picolinate)	75mcg	215%
Choline (as choline bitartrate)	150mcg	27%
Cherry Blaster Proprietary Blend	557mg	**
L-Phenylalanine, L-Taurine, Caffeine Anhydrous, Guarana seed Extract, L-Glycine, L-Trypsine, L-Theanine, Creatine Monohydrate, Ginseng Panax Extract (root), Gamma Aminobutyric Acid (GABA), Ginkgo Biloba Extract (Leaf), Yerba Maté Extract (leaf), Acetyl L-Carnitine HCl, Inositol, Glucuronolactone, Coenzyme Q10 (CoQ10).		
*Percent Daily Values (DV) are based on a 2,000 calorie diet.		
**Daily Value (DV) not established		
OTHER INGREDIENTS: Tapioca, Starch, Citric Acid, Natural Flavors, Beetroot Powder (for color), Stevia Extract. Contains ingredients derived from soy.		



Your go-to source for enhanced performance and revitalized energy.

HEALTHY



STEM CELL RELEASE FACTOR

A POWERFUL ANTI-AGING FORMULA

By integrating Stem Cell Release Factor™ into your daily wellness routine, you are taking a proactive step in nurturing your body's ability to thrive, despite the natural challenges of aging.

Experience the empowering effects of this supplement in supporting your journey towards optimal health and cellular rejuvenation.

Stem cells are vital components for healing, renewing, regenerating, and restoring damaged tissues and muscles in the body. These master cells can form into specialized cells, such as muscle cells, blood cells, and even brain cells. Circulating the bloodstream, they flow to the tissues in need, reproduce, and become healthy new cells within the tissue.

Between the ages of 35 and 40, the release of stem cells from our bone marrow into circulation decreases significantly, leading to a 50% reduction in our body's capacity for self-renewal, regeneration, and repair.

The good news is the ingredients in our Stem Cell Release Factor™ product have been clinically proven to help release millions of our own stem cells from our bone marrow back into circulation to do what they do.

SHOWN TO HELP THE BODY RELEASE MILLIONS OF STEM CELLS, SUPPORT HEALTHY STEM CELLS, AND STIMULATE THE MIGRATION OF STEM CELLS!

Packed full of all-natural, powerful ingredients.



Sea Buckthorn (*Hippophae rhamnoides* berry) Extract 5:1

Enhances rapid and selective mobilization of stem cell types involved in regenerative and reparative functions.



AFA Extract (*Aphanizomenon flos-aquae* concentrate 5:1)

Nutritional mobilization of the immune system with rapid effects on the circulation and function of immune cells in humans.



Fucoidan 85% (*Laminaria Japonica* alga extract)

A natural compound found in brown seaweed that has many beneficial functions, such as immunomodulation, antioxidant, etc.



Piperine (*Piper longum* fruit extract)

Piperine extract has beneficial functions that increase absorption of a variety of nutrients.

Supplement Facts		
Serving Size: 2 Vegetable Capsules		
Servings per Container: 30		
	Amount Per Serving	% DV
Proprietary Blend: See Buckthorn:		
(Hippophae rhamnoides berry) Extract		
5:1, Aphanizomenon flos-aquae (AFA)		
alga Concentrate 5:1, Fucoidan 85%		
(Laminaria Japonica alga extract),		
Piperine (Piper longum fruit extract)		912 mg †
†% Daily Value Not Established.		
OTHER INGREDIENTS: hypromellose (vegetable capsule), organic rice concentrate.		
MANUFACTURED EXCLUSIVELY FOR:		
Great Life Worldwide		
Beloit, KS 67420		
1.866.822.5559		
*These statements have not been evaluated by the Food and Drug Administration. This product is not intended to diagnose, treat, cure or prevent any disease.		

Key Benefits

SCIENTIFICALLY PROVEN INGREDIENTS:

- SHOWN TO RELEASE MILLIONS OF STEM CELLS
- SUPPORT HEALTHY STEM CELLS
- STIMULATE MIGRATION OF STEM CELLS
- PROTECT MESENCHYMAL STEM CELLS AGAINST OXIDATIVE STRESS AND ENHANCE VASCULAR REGENERATION.
- ANTIVIRAL, NEUROPROTECTIVE, AND IMMUNE-MODULATING EFFECTS

UNLOCK YOUR BODY'S FULL POTENTIAL



GLP-XTREME

ADVANCED WEIGHT MANAGEMENT FORMULA

GLP-Xtreme is more than just a supplement—it's backed by science. Studies on the ingredients in our formula have shown real results.

Resistant Starches: Fuel for a Metabolic Revolution

The resistant starches in GLP-Xtreme—derived from sources like pea starch, green banana flour, maize starch, and potato starch, resist enzymatic digestion, which allows them to pass through the small intestine largely intact and enter the colon, where they encounter a thriving community of gut bacteria.

In the colon, these resistant starches undergo fermentation by beneficial gut bacteria, producing short-chain fatty acids (SCFAs) such as butyrate, acetate, and propionate. These SCFAs are signaling molecules that communicate directly with the enteroendocrine cells lining your gut, particularly L-cells. These specialized cells respond to the presence of SCFAs by secreting **Glucagon-Like Peptide-1 (GLP-1)**, a hormone that plays a pivotal role in **regulating appetite** and **glucose metabolism**.

The slow digestion of resistant starches also reduces the glycemic response to meals, preventing rapid spikes and subsequent crashes in blood sugar. This steady blood sugar stabilization helps **maintain consistent energy levels** and **reduces the likelihood of hunger-induced snacking**.

GLP-1: The Hormonal Key to Satiety and Metabolic Balance

As GLP-1 is released into your bloodstream, its effects ripple throughout your body.

- In the brain, GLP-1 signals the hypothalamus, the control center for appetite regulation, effectively **suppressing hunger** and **promoting a feeling of fullness**.
- At the same time, GLP-1 slows gastric emptying, ensuring that food remains in your stomach longer, which **enhances satiety** and **reduces the likelihood of overeating**.
- In the pancreas, GLP-1 acts as a metabolic modulator, stimulating insulin secretion in response to rising blood sugar levels while simultaneously suppressing glucagon release. This dual action helps **maintain optimal blood glucose levels**, **reducing the risk of energy crashes** that often lead to cravings for quick carbohydrates.

Key Ingredients

- Akkermansia muciniphila thrives in the gut mucus layer, where it strengthens the gut barrier, reduces inflammation, and enhances metabolic health. By improving gut barrier integrity, Akkermansia supports the interactions between nutrients and the L-cells that produce GLP-1, amplifying the effects of the resistant starches.
- EGCG is a powerful catechin derived from green tea that has been shown to enhance GLP-1 secretion by interacting with gut cells and microbiota. Beyond its effects on GLP-1, EGCG supports fat oxidation and reduces inflammation, creating a metabolic environment conducive to weight management.
- Genistein modulates glucose metabolism and has been linked to the stimulation of GLP-1 secretion. Together, EGCG and Genistein work as metabolic enhancers, ensuring that the body's natural processes of blood sugar regulation and appetite suppression are optimized.
- Larch Arabinogalactan serves as a food source for beneficial gut bacteria, fostering a diverse and balanced microbiome. By nourishing bacteria that produce SCFAs, it indirectly contributes to GLP-1 release. Additionally, this fiber supports immune function and reduces gut inflammation, further enhancing overall health.
- Black Pepper Extract (Dutrine®) is rich in piperine, which enhances the absorption of key nutrients in GLP-Xtreme. By increasing bioavailability, piperine ensures that the resistant starches, probiotics, and bioactives reach their target sites effectively, maximizing their impact on the body.

Supplement Facts		
Serving Size: 1 scoop (9.2g)		Servings Per Container: 30
	Amount Per Serving	% DV*
Calories	30	
Total Carbohydrates	7 g	3%
Dietary Fiber	2.6 g	9%
Sodium	3 mg	<1%
Resistant Starch (RS) Blend	9.2 g	†
Pea Starch (RS Type 1), Green Banana Flour (RS Type 2), Pre-gelatinized Maize Starch (RS Type 2), Potato Starch (RS Type 3), Larch Arabinogalactan (Larch Arabinose bark), Epigallocatechin Gallate (EGCG: from green tea), Akkermansia muciniphila (NLI 1.2 Billion IFU*), Genistein (from Japanese Pagoda Tree: Styphnolobium japonicum), Dutrine® (Black Pepper fruit extract (NLI 95% Piperine))		
*NLI value based on a 1000 units per day diet. †NLI value not established.		
Other Ingredients: none.		
Manufactured Exclusively For: Great Life Worldwide Bellevue, KS 64620 Questions? 866-622-5559		
These statements have not been evaluated by the Food and Drug Administration. This product is not intended to diagnose, treat, cure or prevent any disease.		

GLP-Xtreme doesn't promise miracles. Instead, it amplifies the natural processes your body already relies on, making it a powerful ally in your journey toward metabolic health and well-being.

SLEEP TONIGHT™

NATURAL SLEEP SUPPORT FORMULA

A masterfully formulated natural sleep aid designed to help you drift off more quickly, sleep more soundly, and wake up feeling revitalized, ready to embrace the day ahead.

Leveraging a powerful blend of nature's most effective sleep enhancers with ingredients such as L-Tryptophan, Ashwagandha, and Magnesium Glycinate, this product helps to harmoniously regulate your sleep cycle, relax your body, and calm your mind.

***A GOOD NIGHT'S SLEEP
IS THE FOUNDATION OF
A HEALTHY LIFESTYLE***





L-Tryptophan

The body changes this into a chemical used by the brain called serotonin, which helps control your mood and sleep.



Magnesium Glycinate

Research shows this helps your brain calm down and relaxes your muscles. It's known for its calming properties and may promote relaxation and sleep.



Ashwagandha (*Withania somnifera*) (root and leaf)

The body changes this into a chemical used by the brain called serotonin, which helps control your mood and sleep.



Valerian (*Valeriana officinalis*) (root) extract 5:1

Helps people fall asleep faster and feel that they have a better quality of sleep. Has been used to ease insomnia, anxiety, and nervous restlessness since the second century.



GABA (*Gamma Amino Butyric Acid*)

An amino acid that helps regulate brain activity and promotes relaxation, which in turn improves sleep.



Chamomile (*Matricaria recutita*) (flower)

Contains antioxidants that may promote sleepiness, and has been shown to improve overall sleep quality.



Passionflower (*Passiflora incarnata*) (whole herb)

Traditionally used to help with improving the quality of sleep and promotes relaxation and rest.



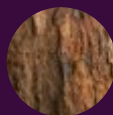
Lemon Balm

Helps to soothe the nervous system, prevent restless energy and keep you asleep.



Melatonin

Regulates the sleep-wake cycle by chemically causing drowsiness and lowering the body temperature.



Magnolia Bark

The polyphenols in magnolia bark — honokiol and magnolol — have been found to help induce and improve sleep.

Supplement Facts	
Serving Size: 2 Capsules	
Servings per Container: 30	
Amount Per Serving	% DV
Proprietary Blend: L-Tryptophan, Ashwagandha (<i>Withania somnifera</i>) (root and leaf) Magnesium Glycinate, Valerian (<i>Valeriana officinalis</i>) (root) extract 5:1, GABA (<i>Gamma Amino Butyric Acid</i>) Chamomile (<i>Matricaria recutita</i>) (flower) Passionflower (<i>Passiflora incarnata</i>) (whole herb) (<i>Passiflora incarnata</i> (whole herb) Lemon Balm, Magnolia Bark, Melatonin.	1180 +
*% Daily Value Not Established.	
OTHER INGREDIENTS: Rice Flour, MCC, Vegetable Magnesium Stearate, Silicon Dioxide.	
MANUFACTURED EXCLUSIVELY FOR: Great Life Worldwide Beloit, KS 67420 1.866.822.5559	



FACE CARE SKIN

Hyaluronic Acid

This powerful ingredient is great at retaining water. In fact, it can bind over 1,000 times its weight in water offering great hydration.

Vitamin C

This powerful antioxidant can stimulate the production of collagen, which increases skin firmness and elasticity.

NU-DERMA GOLD™

POTENT ANTI-AGING SERUM

A synergistic blend of Hyaluronic Acid, Vitamin C Serum, and Collagen, each renowned for its unique benefits, is at the heart of Nu-Derma Gold.

Hyaluronic Acid offers instant hydration, visibly plumping the skin to smooth out wrinkles and impart a youthful glow.

Vitamin C, a powerful antioxidant, works diligently to protect your skin while boosting collagen production, filling in fine lines, and enhancing skin strength.

Experience the transformative power of Nu-Derma Gold, where each ingredient is carefully selected to ensure your skin receives the best of nature's offerings for beauty that transcends time.



Revered for its anti-aging properties, collagen contributes significantly to this rich formula. It works to give your skin a smooth, radiant appearance, reducing visible signs of aging, moisturizing, and improving skin elasticity.

Peptides, another key component, build upon this foundation, promoting collagen and elasticity, thus revitalizing the skin's texture and resilience, supporting a younger-looking appearance.



Collagen

Renowned for improving skin elasticity, reducing visible wrinkles, and increasing blood flow to the skin.

Nature's most potent ingredients to help renew, rejuvenate, and revitalize your skin

- Purified Water
- Aloe Barbadensis Leaf Juice
- Glycerin
- Hyaluronic Acid & Vitamin C (Ascorbic Acid)
- Dipropylene Glycol
- Allantoin
- Hydrolyzed Collagen
- Hydrolyzed Wheat Protein
- Butylene Glycol
- Ethoxydiglycol
- Palmitoyl Hexapeptide - 14
- Lycium Barbarum (Goji Berry) Fruit Extract
- Panthenol (Provitamin B5)
- Punica Granatum (Pomegranate) Fruit Extract
- Euterpe Oleracea (Acai) Fruit Extract
- Tetrasodium EDTA
- Carbomer
- Methyl Cluceth-20
- Potassium Hydroxide

FOR THOSE PROACTIVE
ABOUT THEIR HEART
HEALTH AND SEEKING AN
ALLY IN THEIR JOURNEY,

CLEAR HEART™ STANDS AS A BEACON OF HOPE AND SUPPORT.

Over time, our cardiovascular system, a vital network of arteries and veins, can encounter challenges from the accumulation of plaque and calcium deposits. Often a result of age, diet, and lifestyle factors, this build-up can hamper optimal blood flow and overall heart health.

Recognizing these intricacies and the necessity of maintaining a vibrant cardiovascular system, Clear Heart™ was meticulously developed. With a blend of hand-selected ingredients known for their potential benefits, it emphasizes comprehensive cardiovascular well-being.

It's tailored for individuals who understand the importance of healthy arteries, balanced arterial pressure, a steady heart rhythm, and unimpeded circulation.

Furthermore, the ingredients have been associated with helping address years of buildup, aiming to refresh and rejuvenate the heart's intricate pathways.



Supplement Facts	
Serving Size: 4 Capsules	Servings per Container: 30
Amount Per Serving	% DV
Vitamin C (ascorbic acid) 300mg	333%
Vitamin E (D-alpha tocopherol) 300IU	1,340%
Vitamin B-6 18.7 mg	1,103%
Niacin 15 mg	94%
Folic Acid 750 mcg	188%
Calcium (Carbonate, Citrate) 150 mg	15%
Vitamin B-12 750 mcg	31,250%
Magnesium (Oxide) 150 mg	36%
Potassium (Chloride) 150 mg	3%
CO Enzyme Q-10 22.5 mg	†
Nattokinase 56.25 mg	†
EDTA 450 mg	†
Resveratrol 15 mg	†
Proprietary Herbal Blend 172.5 mg	†
Acai Berry, Quercetin, Hawthorne Berry, Parsley, Ginkgo Biloba	
Proprietary Amino Acid Blend 356 mg	†
L-Cysteine (HCL), L-Arginine, L-Carnitine, L-Citrulline	
† Daily Values (DV) are based on a 2,000 calorie diet.	
Other Ingredients: Magnesium Stearate, Soybean Oil, Vegetable Cellulose capsule	
Contains: Soy & Wheat.	



These statements have not been evaluated by the Food and Drug Administration. This product is not intended to diagnose, treat, cure or prevent any disease.

PACKED
WITH THE
MOST
POWERFUL
AND PROVEN
INGREDIENTS
TO HELP YOU
ACHIEVE
MAXIMUM
RESULTS



KETO FAT BURNER™

Metabolic Ketosis Support

Ketosis is the state in which your body burns fat for energy instead of carbs. This product contains a powerful blend of proven ingredients designed to not only assist in faster achievement of ketosis but also support increased energy levels, healthy fat burning, improved mental focus, and rapid action.

It is an ideal choice for both men and women looking to optimize their ketogenic lifestyle.

Supplement Facts		
Serving Size: 3 Capsules		
Servings per Container: 30		
	Amount Per Serving	% DV
Maximum Strength Proprietary Keto Blend	2110 mg	**
Calcium Beta-Hydroxybutyrate		
Magnesium Beta-Hydroxybutyrate		
Sodium Beta-Hydroxybutyrate		
Potassium Beta-Hydroxybutyrate		
MCT Oil		
***% Daily Value (DV) not established		
Other Ingredients: Gel capsule, rice flour, magnesium stearate.		
MANUFACTURED EXCLUSIVELY FOR: Great Life Worldwide Beloit, KS, 67420 1-866-822-5559		
  MADE IN USA		
<small>*These statements have not been evaluated by the Food and Drug Administration. This product is not intended to diagnose, treat, cure or prevent any disease.</small>		

Supplements



SUPER GREENS SUPER FRUITS

POWERFUL 6-IN-1 SUPER FOODS COMPLEX FORMULA

This is more than a supplement; it's a daily commitment to balanced nutrition and well-being.

Whether added to a smoothie or mixed with water, it offers a delicious mango flavor and a convenient way to boost your daily nutrient intake and support a healthy lifestyle.

Super Greens - Super Fruits contains a unique blend of organic and natural ingredients designed to support your body's natural cellular energy levels, glucose metabolism, digestion, and more!

- Organic Greens Blend
- Super Fruits - Antioxidant Rich Blend
- Digestive Enzymes
- EFA Fiber Blend
- Pre & Probiotics Blend
- Vitamins & Trace Minerals



SUPPORT NATURAL
CELLULAR ENERGY LEVELS



FEATURING A DELICIOUS
MANGO FLAVOR



SUPPORT HEALTHY IMMUNE
SYSTEM FUNCTION

HARNESS THE POWER OF GREENS AND FRUITS IN ONE DAILY SCOOP

TAP INTO THE ANCIENT WISDOM OF SUPER GREENS & SUPER FRUITS FOR YOUR MODERN LIFE

Packed full of all-natural, powerful ingredients.

Organic Greens Blend

- Includes nutrients known for detoxifying properties, supporting liver health, and boosting energy levels.
- Ideal for those looking to enhance their daily nutrient intake and support overall cellular health.

Antioxidant-Rich Superfruits

- Includes powerful antioxidants, which are crucial for combating oxidative stress and promoting immune health.
- Beneficial for heart health and skin vitality, supporting your body's natural defense systems, and maintaining a youthful complexion.

EFA Fiber Blend

- From nutrients that promote healthy digestion and regularity
- Beneficial for those looking to support their gut health, manage weight, and maintain healthy blood sugar levels.

Digestive Enzymes

- Consists of enzymes that aid in the efficient breakdown and absorption of nutrients
- Particularly beneficial for individuals looking to improve their digestive health, alleviate bloating, and optimize nutrient uptake from their diet

Vitamins and Essential Minerals

- Essential substances that our bodies need to function normally

Pre & Probiotics Blend

- Helps maximize gut health. Good health starts in the gut.

NUTRITION FACTS		Amount Per Serving		% DV
Serving Size 1 Scoop (8.9g) Servings per Container: 15		Vitamin B2 370mcg (Riboflavin)		28%
Amount per serving		Vitamin B3 500mcg (Niacin)		3%
Calories		Vitamin B6 60 mcg (as Pyridoxine HCl)		4%
		Methyl Folate 35 mcg (L-5) methyltetrahydrofolate Calcium)		9%
Total Carbohydrate 3g		Vitamin B12 14mcg (as Methylcobalamin)		583%
Dietary Fiber 1g		Calcium 6mg (as Calcium Citrate)		50%
Total Sugars <1g		Iron 2mg		11%
Includes 0g Added Sugar		Magnesium 18mg		6%
Protein 2g		Selenium 4mcg (as Selenium Glycinate)		7%
Not a significant source of sat. fat, trans fat, cholesterol or sodium.		Manganese 115mcg (as Manganese Citrate)		50%
Vitamin A 4645iu/1.39mg (as Retinyl Palmitate)		Potassium 30mg (as Potassium Citrate)		1%
Vitamin C 28mg (as Ascorbic Acid)		Organic Greens Blend:		5300mg †
Vitamin K 39mcg		Organic Wheatgrass, Organic Alfalfa Grass, Organic Spirulina, Organic Spinach, Organic Broccoli, Organic Chlorella (cracked cell wall).		
		Amount Per Serving		% DV
		Antioxidant Blend:		1000mg †
		Organic Acai Berry, Organic Carrot, Organic Beet Root, Blueberry Fruit Extract, Papaya Fruit, Pineapple Fruit, Green Tea Leaf Extract, Red Wine Extract, Celery Leaf		
		EFA Fiber Blend		650mg †
		Organic Flax Seed, Apple Pectin.		
		Digestive Enzyme & Active Culture		350mg †
		Pre & Probiotic Blend:		
		FOS Fructooligosaccharides Lactobacillus Acidophilus Freeze-Drying Powder - 3500 Million CFU Fungal α-amylase - 3000 DU Aspergillus niger Lipase, Food Grade - 300 FIP Cellulase (Powder		
		*Percent Daily Values (DV) are based on a 2,000 calorie diet.		
		† Daily Value (DV) not established		
		Other Ingredients: Citric Acid, Stevia, Natural Flavoring, Malic Acid, Silicon Dioxide.		

Superfoods



GET JUICED

SUPERFOODS COMPLEX HIGH ORAC CELLULAR NUTRITION

Maintaining a balanced diet rich in fruits and vegetables can be challenging.

With over 100 organic and natural ingredients, including brain and body superfoods, this supplement steps in as your all-in-one solution, offering a powerhouse of nutritional support.

SIMPLIFY YOUR HEALTH ROUTINE WITH GET JUICED

DID YOU KNOW?

It's widely known that most people don't consume enough fruits and vegetables in their diet. It's a lesser known fact how often this happens. In a country like the USA - only 1 in 10 people get enough fruits and vegetables in their diet.

SUPPLEMENT FACTS

Serving Size: 3 Capsules Servings per Container: 30

Amount Per Serving % DV			Amount Per Serving % DV		
Vitamin A (67% beta-carotene / 33% palmitate)	10,000 IU	200%	42 Fruit and Vegetable Blend	210 mg	†
Vitamin C (ascorbic acid)	300mg	555%	Consisting of Blueberry, Cranberry, Grape Seed, Strawberry, Raspberry, Pomegranate, Bilberry, Alfalfa, Carrot, Beet, Broccoli, Acai, Chokeberry, Apple, Apple Pectin, Maqui Berry, Grape Skin, Black Cherry, Tomato, Barley, Celery, Chlorella, Black Currant, Artichoke, Mango, Pineapple, Spirulina, Chlorophyllin, Dandelion, Wheat Grass, Green Tea, Milk Thistle, Eleutherococcus Senticosus, Ashitaba, Bing Cherry, Elderberry, Goji Berry, Grapefruit, Mangosteen, Spinach, Tart Cherry, and Papaya.		
Calcium (phosphate / amino acid chelate)	117mg	12%			
Vitamin D-3 (cholecalciferol)	267 IU	67%			
Vitamin E (d-Alpha tocopheryl acetate)	67 IU	222%			
Vitamin B-1 (thiamin mononitrate)	33mg	222%			
Vitamin B-2 (riboflavin)	33mg	1961%			
Niacin (Niacin granular)	7mg	33%			
Vitamin B-6 (pyridoxine hcl)	33mg	1667%			
Folic Acid	267mcg	67%			
Vitamin B-12 (cyanocobalamin)	67mcg	1111%			
Biotin	67mcg	229%			
Pantothenic Acid (d-calcium pantothenate)	13mg	133%			
Phosphorus (dicalcium phosphate)	48mg	5%			
Potassium (as citrate)	33mg	<1%			
Magnesium (Amino acid chelate)	67mg	17%			
Zinc (glycinate monohydrate)	10mg	67%			
Selenium (amino acid chelate)	33mcg	47%			
Copper (oxide)	133mcg	7%			
Manganese (sulfate)	1mg	67%			
Chromium (as polynicotinate)	33mcg	28%			
Enzyme Complex (from plants)			Proprietary Blend		
(Consisting of Cellulase, Bromelain, Papein, Amylase, Trypsin & Lipase)			836 mg †		
% Daily Value (DV) based on a 2,000 calorie diet. † Daily Value (DV) not established			Spirulina Algae, Wheat Grass, Safflower (powder), Lecithin, Choline Bitartate, Inositol, Citrus Bioflavonoids 50% Complex, Gotu Kola Powder, Echinacea Purpurea Root Powder, Green Tea (98% extract), PABA (para-Aminobenzoic Acid), Psyllium Husks, Oat (avena sativa 10:1 extract), Apple Pectin, Chlorophyll (sodium copper chlorophyllin), Trace Mineral Complex, Kelp, Boron (as amino acid chelate), Octacosanol, L.Acidophilus.		

Other Ingredients: Microcrystalline cellulose, vegetable stearic acid, vegetable magnesium stearate, croscarmellose sodium, and pharmaceutical glaze.

ACAI PLUS

SUPERFRUITS POWERHOUSE

Harnessing the power of superfruits like Acai, Mangosteen, Noni, and Goji, each celebrated for its health-enhancing properties, this potent blend is further enriched with Pomegranate, Resveratrol, and Grape Seed, ingredients known for their powerful antioxidant effects.

Embrace the natural potency of AcaiPlus. Each capsule is a step toward energized wellness, tapping into the ancient wisdom of superfruits for your modern life.



ENERGIZE AND NOURISH WITH NATURE'S BEST

Supplement Facts		
Serving Size: 2 Capsules		
Servings per Container: 30		
	Amount Per Serving	% DV
Proprietary Blend	1260 mg	**
Acai 4:1 Extract (<i>Euterpe oleracea</i>) (fruit), Goji Berry 40% Extract (<i>Lycium barbarum</i>) (fruit), Noni Fruit 10:1 Extract, Mangosteen Fruit, Pomegranate Fruit (40% extract), Trans-Resveratrol (from <i>Polygonum cuspidatum</i> root extract), Raspberry Fruit Powder, Black Chery Fruit Powder, Blueberry Fruit Powder, Elderberry Fruit 5% Extract (<i>Sambucus Nigra</i>), Grape Skin 30% Extract (skin and pulp).		
**% Daily Value (DV) not established		
Other Ingredients: Vegetable cellulose (vegetarian capsule) rice flower, and vegetable magnesium stearate.		
MANUFACTURED EXCLUSIVELY FOR: Great Life Worldwide Beloit, KS, 67420 1-866-822-5559		
 		
*These statements have not been evaluated by the Food and Drug Administration. This product is not intended to diagnose, treat, cure or prevent any disease.		



HEALTHY



PROCLEANSE

DAILY SUPPORT • CLEANSE NATURALLY

Taking a gentle, holistic approach to detoxification and digestive health, Procleanse is ideal for those looking to support their body's natural cleansing processes without harsh ingredients.

This exclusive, proprietary blend of proven ingredients is designed to help cleanse the gastrointestinal tract, ease the elimination of toxins, remove unwanted microbes and wastes, promote healthy weight loss and regularity, and more!

***PROVEN INGREDIENTS
DESIGNED TO WORK
AROUND THE CLOCK***

**Hesperidin**

Provides support to the circulatory system.

**Orange Peel Powder**

Rich in vitamin C and antioxidants

**Lemon Peel Powder**

Supports the digestive system

**Quince Fruit Powder**

Has a high level of antioxidants, including phenolic and phytonutrient compounds

**Papaya Enzyme**

A natural digestive enzyme

**White Chia Seed Powder**

High levels of soluble fiber

**Aloe Vera**

Helps to support the body's own healing processes

**Chicory Root**

Acts as a prebiotic

**Buckthorn Bark**

Helps maintain gut flora levels

**Cranberry Extract**

Helps keep bad bacteria from colonizing

Supplement Facts

Serving Size: 2 Capsules Servings per Container: 30

	Amount Per Serving	% Daily Value
Vitamin C (as ascorbic acid)	150 mg	167%
Magnesium (as magnesium hydroxide)	380mg	90%
Sodium	50 mg	2%
Selenium	50 mcg	91%
Sodium Bicarbonate	190mg	**

Citrus Bioflavonoids Blend

100mg **
Hesperidin (from orange), Orange Peel Powder,
Lemon Peel Powder, Quince Fruit Powder

Proprietary Blend

180mg **
Papaya Enzyme, White Chia Seed Powder,
Aloe Vera, Chicory Root, Cranberry Extract,
Buckthorn Bark (Rhamnus frangula bark)

**% Daily Value (DV) not established

Other Ingredients: Hypromellose (vegetarian capsule), and rice flour.

MANUFACTURED EXCLUSIVELY FOR:

Great Life Worldwide
Beloit, KS 67420
1-866-822-5559



*These statements have not been evaluated by the Food and Drug Administration. This product is not intended to diagnose, treat, cure or prevent any disease.

KICKSTART YOUR JOURNEY TO OPTIMAL HEALTH

ELEVATE
HYDRATION
WITH
PUREAQUAMINS



PUREAQUAMINS® ENRICH YOUR CELLS WITH MINERALS

Elevate your hydration game with PureAquaMins – a groundbreaking blend of essential trace minerals extracted through a patented supercritical process from ancient volcanic sources. These minerals, vital for countless bodily functions, support intercellular hydration, balance pH levels, and enhance nutrient absorption.

Studies show that PureAquaMins not only nourishes the body but also helps reduce heavy metals in the blood, offering a unique dual benefit of purification and enrichment. In a world where modern diets often lack these critical nutrients, PureAquaMins reintroduces nature's essential elements into your daily routine.

Add it to your water for revitalizing hydration and whole-body nourishment you can feel.

**CONCENTRATED
LIQUID
MINERALS**

INGREDIENTS: PureAquaMins® is a natural blend of concentrated mineral salts extracted from volcanic formations, containing up to 80 essential and trace minerals.

MANUFACTURED EXCLUSIVELY FOR:
Great Life Worldwide
Beloit, KS, 67420
1-866-822-5559



*These statements have not been evaluated by the Food and Drug Administration. This product is not intended to diagnose, treat, cure or prevent any disease.



PUREO2

BOOST YOUR BODY AND MIND

PURE-02™ Activated Oxygen Drops are engineered using a proprietary process that fuses free oxygen molecules with plant-derived minerals, resulting in a groundbreaking formula to boost oxygen levels in your body. Each serving delivers bioavailable polyatomic tetra oxygen (O4)—a potent form of oxygen at approximately 35% bioavailability, equivalent to 350,000 mg/L.

Studies show that a single serving of PURE-02™ provides 350 mg of bioavailable oxygen, rapidly increasing oxygen levels in the bloodstream within 15 minutes and sustaining them for several hours. This enhanced oxygen uptake supports energy efficiency, mental clarity, and faster recovery from physical stress. Additionally, PURE-02™ has antifungal, antibacterial, and antiviral properties, making it a natural, safe, and eco-friendly solution.

With its stability over two years and even when frozen, PURE-02™ is versatile—add it to water, make oxygen-rich ice cubes, or incorporate it into your daily routine for optimal wellness. Elevate your energy and recovery with PURE-02™ today!

**OXYGENATE
YOUR BODY,
BLOOD, AND
ORGANS.**

SUPPLEMENT FACTS		
Serving Size: 2ml (about 30 drops)		
Servings per Container: 30		
Amount Per Serving		% DV
Chloride	15.6mg	.50%
Sodium	1.1mg	.12%
Chromium	0.02mcg	.1%
Iodine	0.02mcg	.1%

INGREDIENTS: PureO2™ (Bioavailable Oxygen, distilled water, sea salt). PureO2™ may contain trace amounts of iron, manganese, calcium, copper, phosphorus, potassium, and selenium.

PH BALANCED. 100% VEGAN. GLUTEN-FREE. NO ADDITIVES. NO PRESERVATIVES

****BASED ON A PUBLISHED 6TH CLINICAL STUDY**

MANUFACTURED EXCLUSIVELY FOR:
Great Life Worldwide
Beloit, KS, 67420 1-785-654-7080

  **MADE IN USA**

*These statements have not been evaluated by the Food and Drug Administration. This product is not intended to diagnose, treat, cure or prevent any disease.





